

Watson

IBM

Elevating your patient-centered care

Build smarter business processes with IBM Blueworks Live

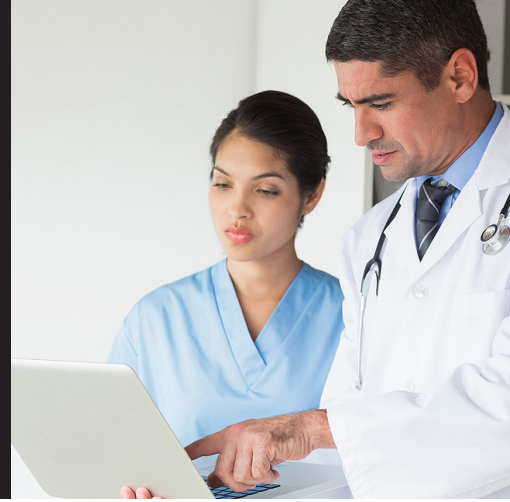
Today's healthcare organizations depend on a wide range of processes, from the front office to the lab. The key elements in these processes—whether involving patients, clinicians, administrative staff, insurance providers, medical partners, suppliers or other third-party entities—must all work together accurately and efficiently to ensure the highest quality care. After all, any process bottlenecks or administrative errors can literally be a matter of life or death. That's where process modeling comes in.

Process modeling is an essential way for healthcare organizations to document activities for regulatory compliance, understand the strengths and weaknesses for improving processes, and get a starting point for using automation to streamline operations. Of course, the ultimate goal is improving outcomes for patients.

Yet, many healthcare organizations still rely on basic diagramming tools—or a mix of whiteboards, sticky notes, and photos captured on a smartphone—for their process documentation. Version control is a nightmare, files are easily misplaced, and keeping the software licenses up-to-date is another burden for IT staff. To improve their processes and enable true efficiencies, organizations need a purpose-built process modeling tool.



Transforming processes for smarter healthcare



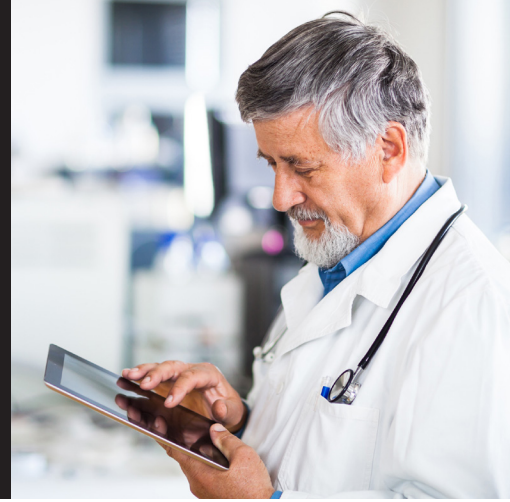
IBM Blueworks Live is a cloud-based business process modeling tool that makes it easy to document, analyze and improve your healthcare processes. Business analysts, medical staff and other subject matter experts can work together using an intuitive web interface, identifying ways to make processes more efficient. And these diverse teams can collaborate from anywhere.

Unlike basic diagramming tools, Blueworks Live provides you with a dedicated, online space for building and improving healthcare processes. Key features include:

- Quick-start templates for bringing the efficiencies of business process management into healthcare service delivery, helping improve quality and affordability
- Support for real-time collaboration to allow different disciplines—from business managers to clinicians—to easily share ideas on patient-centered care
- A centralized process repository to provide a single source of truth for managing service costs, updating processes and facilitating compliance
- Automatic process layout for generating Business Process Model and Notation (BPMN) 2.0 models, transforming the way your organization delivers care
- Compatibility with automation tools to enhance electronic medical records and computerized physician order entry—helping avoid medical errors and improving patient outcomes

Business analysts, medical staff and other subject matter experts can work together using an intuitive web interface, identifying ways to make processes more efficient.

IBM Blueworks Live in action



Here are some examples of how IBM Blueworks Live is being used around the world to create dramatic benefits in healthcare organizations like yours:



One healthcare service provider built an agile development platform for developing, implementing, and changing organ allocation scheme rules on an ongoing basis, allowing them to optimize the scheme based on the latest research and data. With Blueworks Live, the organization can continuously evaluate new processes and models, capturing workflow information in an accessible and understandable format so they can both improve implementation planning and easily articulate those plans to a wider audience—including statisticians, analysts, IT teams, and regulators—so all stakeholders can see how the allocation scheme works.



Another healthcare organization has used IBM Blueworks Live to custom-ize an app that was developed to meet the specific requirements of the nursing staff. This app helps caregivers manage the hospitalization process from registration to release, with patient records and orders available in real time on mobile devices such as tablets and smartphones. Hospital experts defined and validated standard therapeutic pathways that then went into the underlying workflow design. Using these standard processes, the app can guide nurses through a series of prescribed steps, helping minimize omissions, duplication, and other errors.

How IBM can help

By modeling processes with Blueworks Live, healthcare organizations are one step closer to using automation to improve the patient experience. IBM offers a scalable platform for automating repetitive tasks, content management, process workflows, data capture and business decisions—freeing up your humans for higher-value work. Simply export your process models into the tool of your choice. With an established ecosystem and industry expertise, IBM can help transform your processes for lasting value.

To learn more about Blueworks Live and try a free 30-day trial, visit: <https://www.ibm.com/products/blueworkslive>

Why IBM Blueworks Live for healthcare?

- Address increasing process complexity, rising costs and slow, inaccurate processing
- Comprehensively identify and document key business processes
- View processes to recognize bottlenecks and inefficiencies
- Handle processes that span disparate systems, including databases and applications